

# INCLUSION

## THE A453 MULTI-MODAL STUDY NEWSLETTER

ISSUE 1 APRIL 2000

### Dear Reader

This is the first of a series of Newsletters designed to keep you informed of events and progress on the A453 Multi-Modal Study. The study is one of several similar studies being carried out throughout the UK under the remit of Transport Minister Lord Whitty as part of the Government's Integrated Transport policy.

The main purpose of the study is to develop a strategy and programme for implementing solutions to the transport problems in the A453 corridor from now until the year 2021. A similar study is being carried out on the M1 corridor between Sheffield and Leicester and close liaison will be maintained between the two.

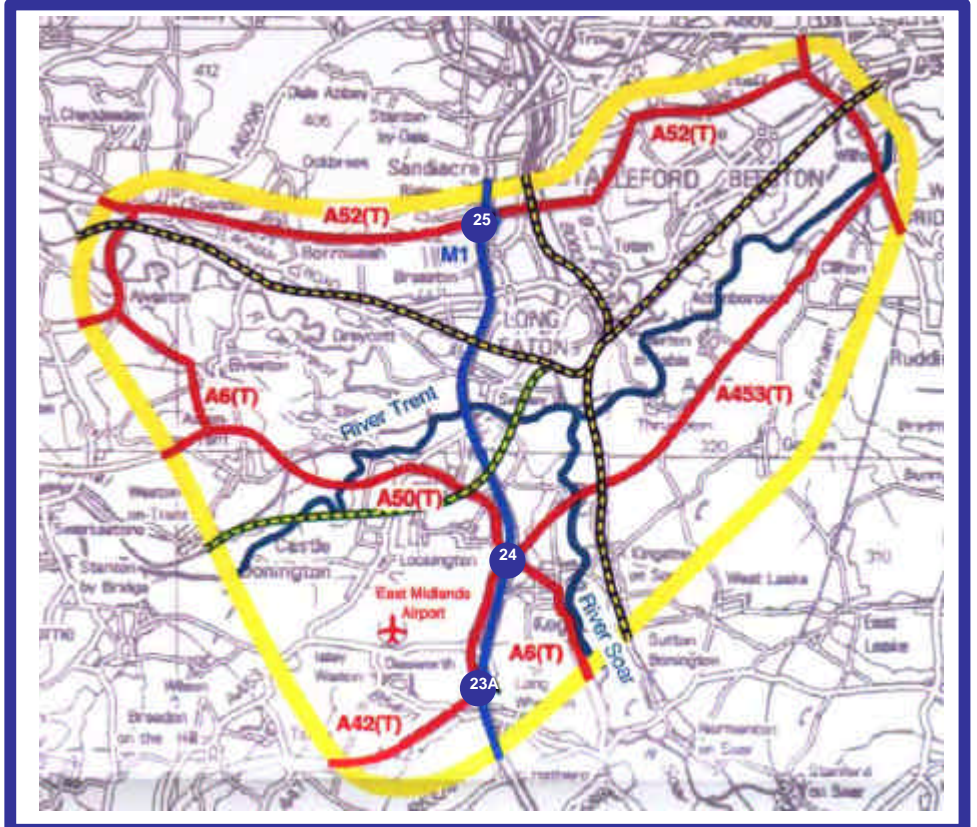
The A453 study covers the whole of the local transport corridor in which the A453 Trunk Road runs and embraces all modes of transport from walking and cycling to road, rail, air and waterborne carriers. The study will also extend to areas adjacent to the immediate corridor which could influence the travel patterns in it.

The Highways Agency manages the A453 but this study is being managed by the Government Office for the East Midlands which has a transport perspective covering all modes, not just roads. There are no pre-conceived views as to what the solutions will be, and innovative ideas are particularly sought.

We are seeking an inclusive process and study is being carried out in an open forum with all persons, communities and organisations. Please let us have your views. The contact details for participation are provided at the end of this Newsletter, and a website at [www.a453multimodal.com](http://www.a453multimodal.com) will be available shortly.

The study provides you with the opportunity to influence the environment in which you either live, work or spend your leisure time. We hope you will join us in developing a safe, sustainable and environmentally acceptable transport solution which serves all the people and businesses in the study area.

Peter Webster – Project Manager



### The Study Area

Whilst the study will be concentrated on the transport needs in the A453 corridor there will be a need to examine the movements in the competing corridors to the north as

far as the A52. The plan shows the general extent of the study area in which all modes of transport including the impact of the East Midlands Airport will be examined.

### The Team

Management and Consultation bodies have been established to ensure a co-ordinated and inclusive approach to Multi-Modal Studies in the East Midlands. Each body is chaired by the Government Office for the East Midlands (GOEM) and made up of representatives from both local and regional organisations. These groups and their roles may be described as follows:

**Regional Steering Group (RSG):** Overall direction and co-ordination of the three East Midlands Studies namely: M1 (North-South) study, A453 Corridor study and the West Midlands to Nottingham study to be commissioned shortly.

#### Project Management Group (PMG):

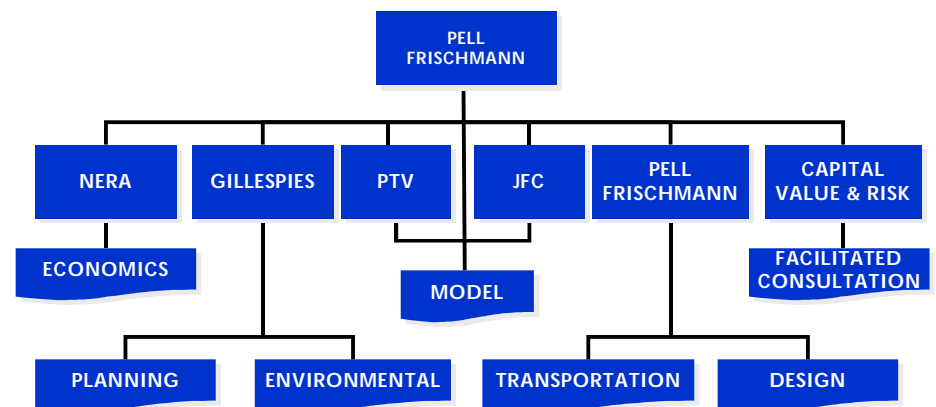
Management of the A453 Multi-Modal Study by a group whose members are from organisations with interest in the study area. Parallel bodies will manage the other studies.

#### Wider Reference Group (WRG):

A consultative body representing many local interest groups formed to focus wide ranging views into the study process.

#### Pell Frischmann Consultants

Project Manager Peter Webster will lead a consortium of specialist companies appointed to assist with the technical work from a local office. The range of skills included in the team is illustrated below:



### Surveys are the Foundation for Success

Over the next few months the study team will be carrying out surveys of various types throughout the study area. Some of these will be basic counts of travellers by whatever mode, train, bus, car, cycle or pedestrian. Some will involve interviews with travellers and householders. We recognise that each of these surveys is an imposition on people's time, but we hope you will co-operate as best you can to give us the firm foundation of accurate information that we need. In support of our inclusive approach to the study we will publish the results of the surveys so that you can see the outcome of your participation.

Thank you in advance for your co-operation.

### Open Invitation

As part of the two way dialogue for the study the team would be pleased to hear from anyone in the study area who considers that they have constructive comment or other input of interest to the study. The team will gladly provide representatives to give short presentations to collective groups such as PTA's, transport companies, environmental or other groups. The watchword is 'INCLUSION'. Please contact Peter Webster to register your interest.

### Access Through the Web



The Government Office for the East Midlands have established some background information about multi-modal studies on their web site at [www.go-em.gov.uk](http://www.go-em.gov.uk). This provides a link to the study's own web site at [www.a453multimodal.com](http://www.a453multimodal.com) which

provides much more local and specific information. The web site will have a bulletin board and discussion forum from time to time, details of which will be posted on the web site home page.

# Building Blocks Of The Project

The study process is founded on 7 basic phases  
Each one crucial to the success of the project  
Anticipated timescales are indicated in brackets

1. **Inception**  
This is the period for data gathering and assessment of the general way forward for the study. (Dec 1999 – Mar 2000)  
The Study Inception Report and associated documents have been completed and are available for inspection. Please contact Peter Webster.
2. **Travel Surveys and Modelling**  
A solid foundation is essential to give confidence to future decisions. A series of travel surveys will be carried out and a computer model will be built to simulate transport movements in the area. (Apr – Nov 2000)
3. **Strategy Development**  
Based on emerging information from the survey phase a strategy for tackling the issues will be developed. (May – Aug 2000)
4. **Option Identification**  
Within the strategy framework, options for problem resolution will be identified. (Sep – Dec 2000)
5. **Consultation**  
This is an ongoing process throughout the study period and has been widened in its concept to encourage all interested persons and organisations to participate. Opportunities to put forward comments and ideas will occur regularly throughout the study period. (Continues with Milestones)
6. **Option Appraisal**  
This process will determine the priority and viability of the options identified. It will collect options together into sensible plans which will assist in solving transport problems. (Jan – Apr 2001)
7. **Recommendations and Programme**  
This is the 'crunch' phase. Based on all inputs to the study a preferred plan will be selected and a programme for implementation put forward. (May – Aug 2001)

THE STUDY COMMENCED IN DECEMBER 1999 AND IS SCHEDULED FOR COMPLETION IN AUGUST 2001.

## Contacts

### PROJECT MANAGER

**Peter Webster**  
Pell Frischmann Consultants Ltd  
Lloyds Court  
659 Silbury Boulevard  
MILTON KEYNES  
MK9 3DP  
Tel: 01908 690620  
Fax: 01908 663010

### PROJECT OFFICER

**Mike Kidger**  
Government Office for the East Midlands  
The Belgrave Centre  
Talbot Street  
NOTTINGHAM  
NG1 5CG  
Tel: 0115 9712504  
Fax: 0115 9712548

### GOEM PRESS OFFICER

**Dee Smith**  
Central Office of Information (COI)  
The Belgrave Centre  
Stanley Place  
NOTTINGHAM  
NG1 5CG  
Tel: 0115 9712788  
Fax: 0115 9712791

THE  
A453  
MULTI-MODAL  
STUDY  
NEWSLETTER

## List of organisations represented in the various groups involved with the A453 Multi-Modal study.

### Project Management Group

AA Associates  
Confederation of Passenger Transport  
Derby City Council  
Derbyshire County Council  
East Midlands Airport  
East Midlands Development Agency  
East Midlands Regional Local Government Association (EMRLGA)  
East Midlands Transport Activists Roundtable (EMTAR)  
Government Office for the East Midlands (GOEM) (Chair)  
Highways Agency  
Leicestershire County Council  
Midland Mainline  
Nottingham City Council  
Nottingham Coalition for Disabled People  
Nottinghamshire County Council  
Railtrack Midlands  
Rushcliffe Borough Council  
Shadow Strategic Rail Authority

### Regional Steering Group

CBI  
Confederation of Passenger Transport  
Derbyshire County Council  
East Midlands Airport  
East Midlands Chambers of Commerce  
East Midlands Development Agency  
EMRLGA

East Midlands Transport Activists Roundtable (EMTAR)  
Freight Transport Association (GOEM) (Chair)  
Highways Agency  
Nottinghamshire County Council  
Notts Coalition of Disabled People  
Railtrack Midland Zone  
Shadow Strategic Rail Authority

### Wider Reference Group

Arriva Fox County Ltd  
Automobile Association  
Barton in Fabis Parish Council  
Beeston Residents Against Vandalism of the Environment  
British Gas Transco  
British Gypsum Ltd  
British Horse Society  
British Telecommunications PLC  
British Waterways  
Broxtove Borough Council  
Cable and Wireless Communications  
Central Trains Ltd  
Clifton & Wilford Area Committee  
Clifton Bypass Campaign Group  
Confederation of Passenger Transport Council for the Protection of Rural England (CPRE) Nottingham Branch  
Countryside Agency  
Crampin Pring McArtney  
Cyclists' Touring Club  
David Wilson Homes  
Derby City Council

Derbyshire County Council  
East Midlands Advisory Group on the Environment  
East Midlands Airport  
East Midlands Ambulance Service  
NHS Trust  
East Midlands Chambers of Commerce  
East Midlands Environment Link  
East Midlands Group CPRE  
East Midlands Voluntary Sector Forum  
English Nature - East Midlands Team  
English Welsh & Scottish Railway Ltd  
Environment Agency  
Erewash Borough Council  
Farnborough Comprehensive School  
Friends of the Earth  
Highways Agency  
Kegworth Parish Council  
Leicester City Council  
Leicestershire Fire and Rescue Service  
Midland Mainline  
National Express Ltd  
National Federation of Bus Users  
North West Leicestershire District Council  
Nottingham City Centre Retail Association  
Nottingham City Council  
Nottingham City Council Conservative Group  
Nottingham City Transport Ltd  
Nottingham Development Enterprise  
Nottingham Forest Football Club Ltd

Nottingham Health Authority  
Nottingham Trent University  
Nottinghamshire Chamber of Commerce  
Nottinghamshire County Council  
Nottinghamshire County Cricket Club  
Nottinghamshire Fire and Rescue Service  
Nottinghamshire Police  
Nottinghamshire Wildlife Trust  
Notts County Football Club  
NTL Ltd  
Oil and Pipeline Agency  
PEDALS  
Pedestrians Associations  
Powergen PLC  
RAC Trafficmaster Telematics Ltd  
Rail Users' Consultative Committee for the Midlands  
Railtrack Midlands  
Railway Development Society (North Midlands)  
Ratcliffe-on-Soar Parish Meeting  
Road Haulage Association Ltd  
Rushcliffe Borough Council  
Severn Trent Water Ltd  
Shadow Strategic Rail Authority  
South Derbyshire District Council  
Sustrans  
The Cyclists' Touring Club  
The Ramblers' Association  
Thrumpton Parish Meeting  
Transport 2000 Nottinghamshire  
University of Nottingham



# INCLUSION